



Ground Ambulance & Patient Billing Advisory Committee

State EMS Officials



Dia Gainor | NASEMSO Executive Director

Common State EMS Officials' Roles

- State EMS Medical Directors
- State Personnel Licensure Managers
- State Pediatric Emergency Care Program Managers
- State EMS Health & Medical Preparedness
- State Trauma System Managers
- State EMS Data Managers
- State EMS Education Managers
- State EMS Director

What Do State EMS Offices Do???

- License paramedics and EMTs (>1 million)
- License ground EMS and air ambulance agencies (11,500 911 ambulance services)
- Manage patient care records submission to the NEMSIS national repository
- Engineer systems of care for time sensitive emergencies
- Implement innovative programs to improve safety and outcomes



Licensed Agencies – By Type

AGENCY TYPE	# of Responding States	Mean	Median	Min	Max	Total (%)
911 Response (scene) with Transport	54	212	153	1	1,100	11,450 (49%)
911 Response (scene) without transport	45	151	79	1	903	6,778 (29%)
Ground Specialty Care Services	40	50	13	1	594	1,988 (9%)
Air Medical Services	52	14	11	1	65	753 (3%)
Non-Ambulance Medical Transport	24	57	10	1	346	747 (3%)
Community Paramedicine-Type	18	8	6	1	25	146 (1%)
Emergency Medical Dispatch (EMD) Center	24	56	29	1	248	1,410 (6%)
GRAND TOTAL						23,272

Licensed EMS Professionals



LICENSE LEVEL	# of Responding States	Mean	Median	Min	Max	Total (%)
Emergency Medical Responder (EMR)	43	2,651	666	4	16,706	113,973 (11%)
Emergency Medical Technician (EMT)	54	10,808	5,791	50	63,522	583,608 (55%)
Advanced Emergency Medical Technician (AEMT)	43	914	322	12	7,232	39,294 (4%)
Other Level Between EMT & Paramedic (excluding AEMT)	21	840	345	10	5,495	17,634 (2%)
Paramedic	52	5,162	3,066	40	33,578	268,420 (25%)
Above (or in addition to) Paramedic	19	442	213	2	1,577	8,399 (1%)
Emergency Medical Dispatcher (EMD)	15	1,434	604	8	8,500	21,514 (2%)
GRAND TOTAL						1,052,842

Other Assessment Findings

- EMS Agency Characteristics
 - Counts of EMS vehicles by type
 - Over 54,000 911 ambulances
 - Nearly 1,600 helicopters and 680 FW
 - Response and transport counts
- EMS Personnel
 - 20 states reporting levels other than AEMT between EMT and Paramedic
 - Age, race, gender not universally collected
- Medical Directors
 - 41 stated reports a total of over 9,300 at the agency level
 - 23 stated reported 334 serving a region/jurisdiction

NEMSIS: The National EMS Information System

- Brainchild of the State EMS Officials in the 1990s
- Original concept did not contemplate cost capture or billing capability
- State EMS office authority/mandate varies
- States submitted nearly 50 million records in CY 2022
- www.nemsis.org

National EMS Information System



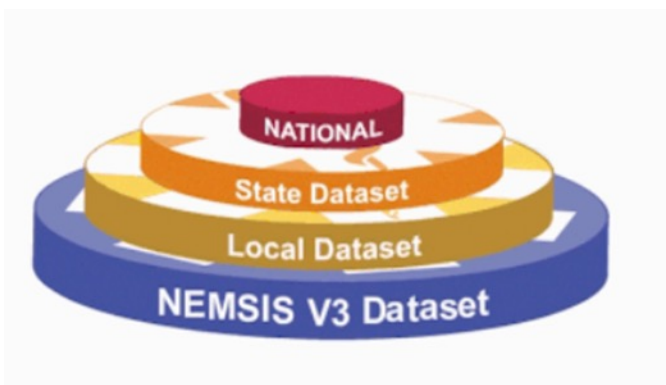
EMS Agency



State Office of EMS



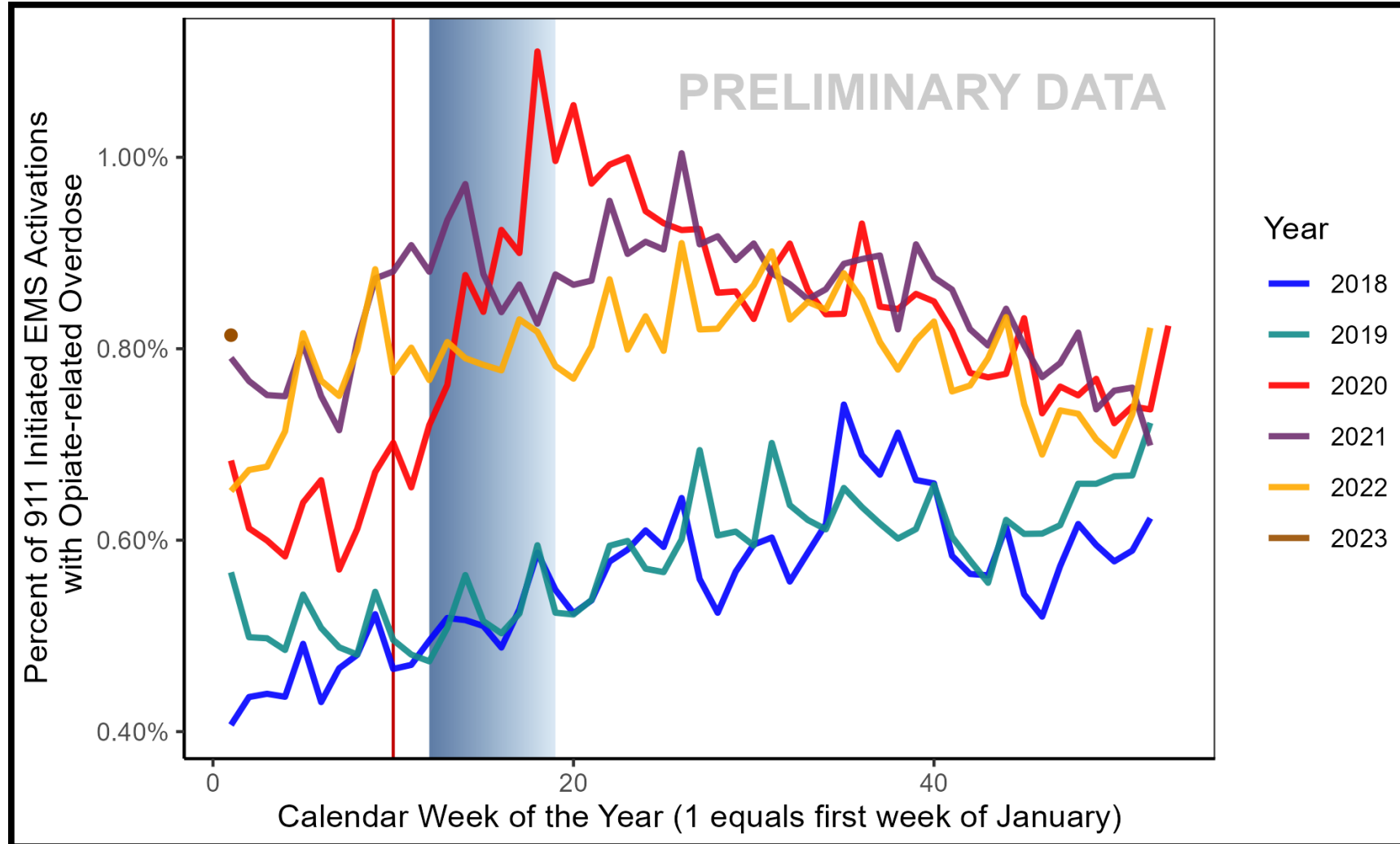
National EMS Database



State EMS Patient Care Reporting Systems

- Near census of EMS data
 - 53 states and territories
 - ~14,000 EMS agencies
- Near real time data
 - Data is submitted continuously to NEMSIS
 - Fastest time from record completion to National Database Arrival = 7 Minutes
 - 99% of data is obtained within 12 days
 - Dashboard delays data display by 2 weeks to ensure submissions

Rate of Opioid-Related Activations





Non-Fatal Opioid Overdose Surveillance Dashboard

January 9, 2022 – January 8, 2023

EMS Data Updated On: January 25, 2023

Select Time Period: Select Jurisdiction: Select Level of Geographic Detail: Select an Overdose Measure:

Average EMS Time to Patient		Number of Opioid Overdoses		Rate of Nonfatal Opioid Overdose per 100k Population		Average Number of Naloxone Administrations per Overdose		Patients Not Transported to a Medical Facility	
Rolling 365 Days	% Change	Rolling 365 Days	% Change	Rolling 365 Days	% Change	Rolling 365 Days	% Change	Rolling 365 Days	% Change
9.8 minutes	+1.9%	184,488	-1.2%	56.0	-1.2%	1.1	-0.5%	21.2%	+4.7%

Top Jurisdictions

Rate of Nonfatal Opioid Overdose

District of Columbia

Connecticut

New Hampshire

Illinois

Alabama

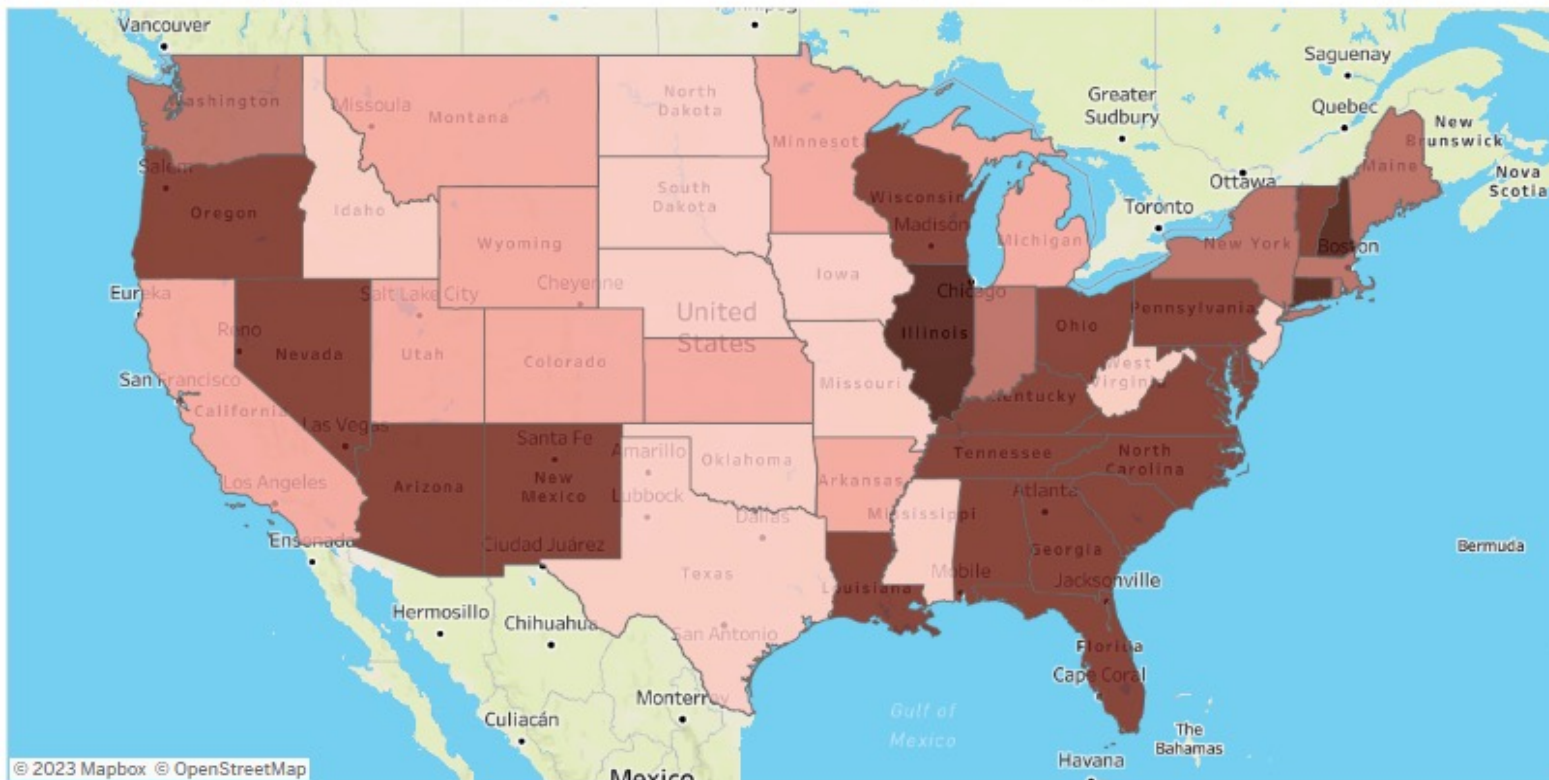
Delaware

New Mexico

Vermont

Kentucky

Oregon



Top Counties

Rate of Nonfatal Opioid Overdose

Menominee, Wisconsin

Roanoke (city), Virginia

Mahnomen, Minnesota

Jasper, South Carolina

Orleans, Louisiana

Walker, Alabama

Carroll, Kentucky

Powell, Kentucky

Jefferson Davis, Louisiana

Philadelphia, Pennsylvania



Recently Completed or Still in Progress...

- Model EMS Clinical Guidelines: A Contemporary Resource for State, Regional and Local Use
- Evidence Based Guidelines: Naloxone, Pain Management, Airway Management
- State Workforce Measurement Strategies
- State EMS Office Strategic Planning
- Developing Crash Test Standards for Pediatric Restraint

Questions?

Dia Gainor

dia@nasemso.org

208-861-4841

